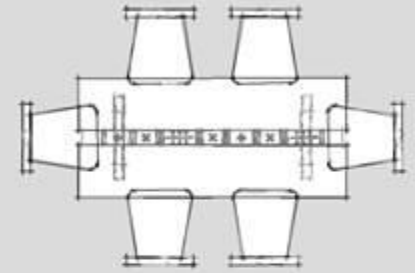




SHAIMAA
BASHARY

INTERIOR
AND
PRODUCT
DESIGNER



Darya

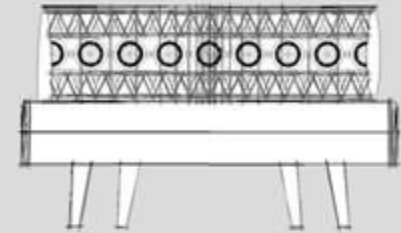


Darya is a most common granies name in old Nubia. Possessing the same good spirit of our oldies, Darya set was designed to offer a touch of beauty & goodness, With its unique shape as well as its Nubian symbols that sine beauty & optimism of old Nubian culture.

عيشة
Design House

Darya Dining set





Gourranda

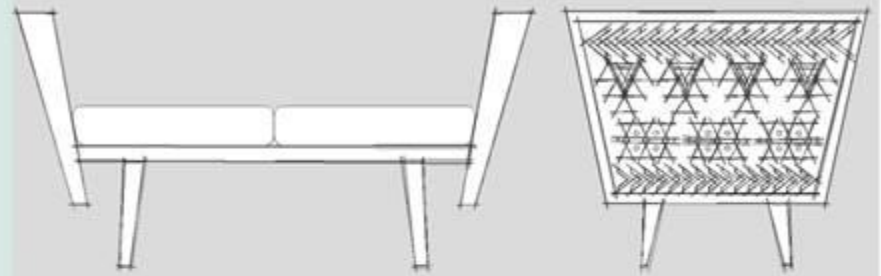
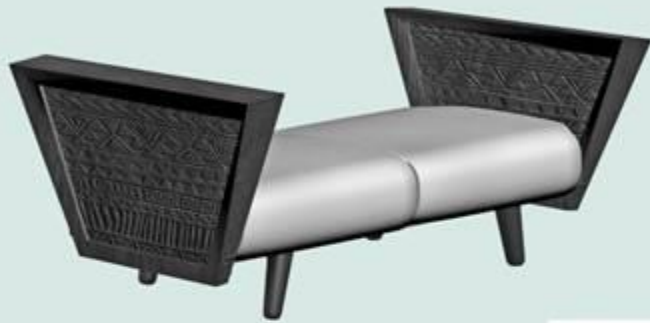


Gourranda is feast for Nubian People
Gourranda aims at spreading a feeling
of joy and ongoing celebration
featuring a big variety of Nubian motifs
used by the old Nubians to express their
happiness & optimism







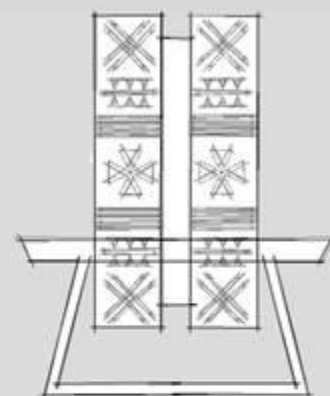


NABRA



Nabra, is the name of an old Nubian queen. Possessing the same beauty of the queen, inspired by old temples lines Nabra, is designed to offer a touch of beauty with its unique shape and its Nubian symbols that sine beauty and optimism of the old Nubian culture

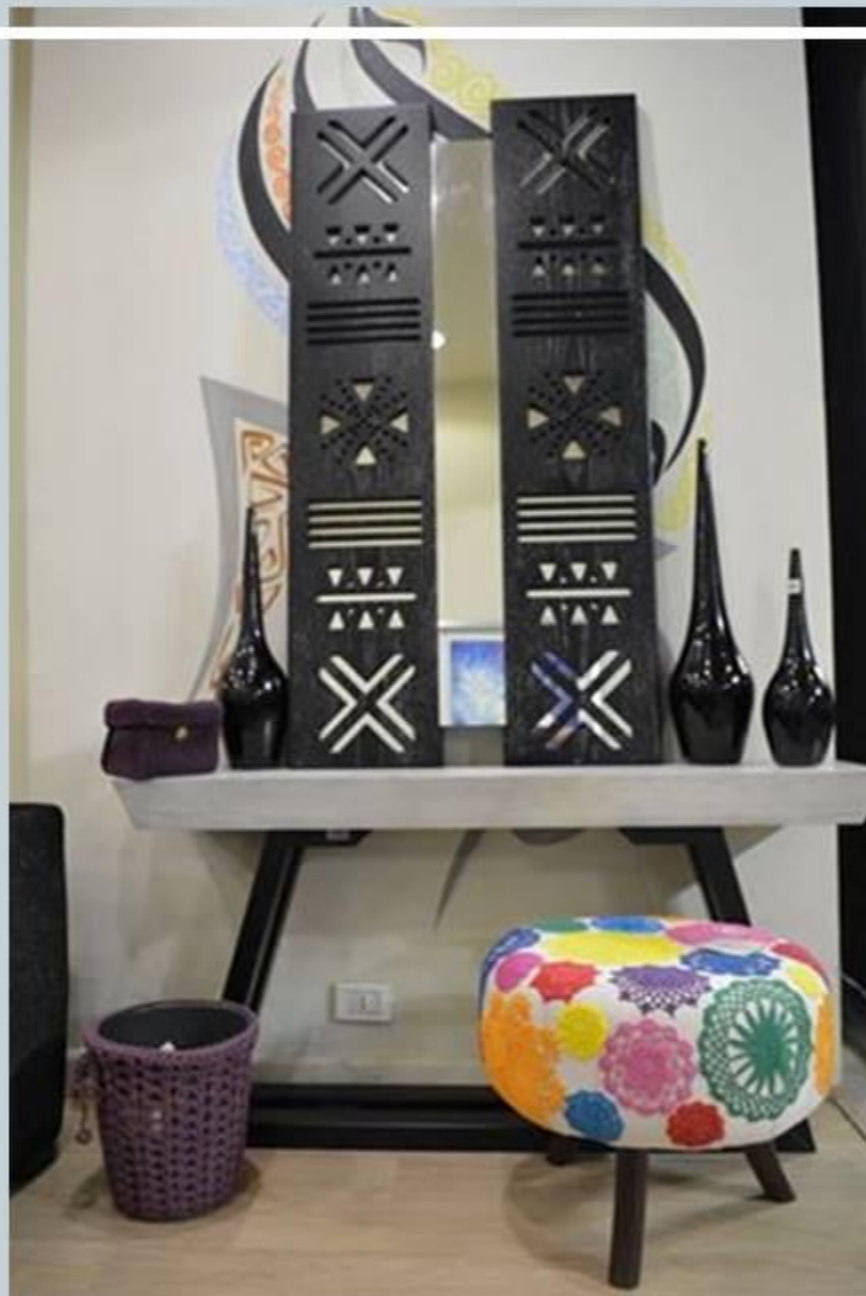


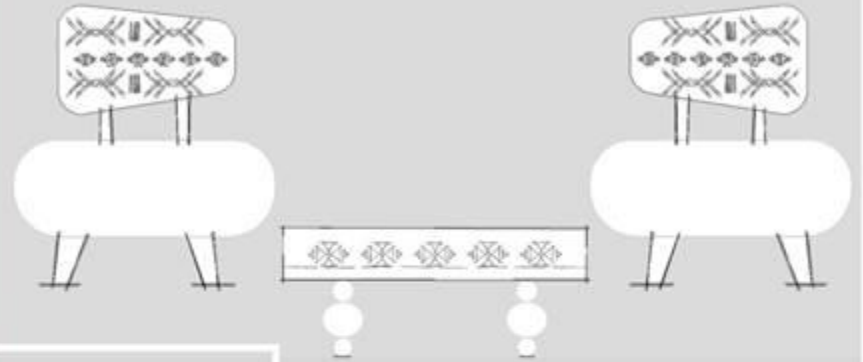
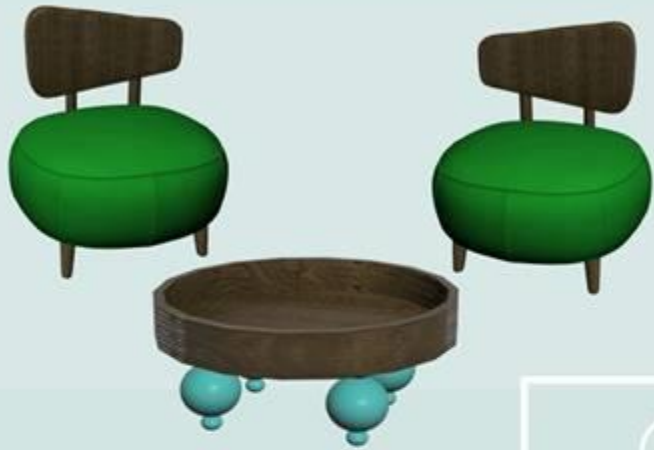


Solayfa



Featuring a variety of folkloric Nubian motifs this console is named Solayfa . Its unique design reflects the authentic lines of the old Egyptian temples & Nubian Houses. the name Solayfa returns to a very old women that lives in Hessa Island south of Aswan, her old house has the same shape of Elephante Temple.



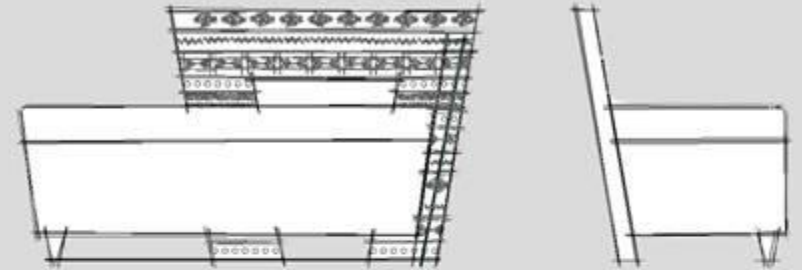


Onetty



Onettythe Moon in the traditional Laguege
this corner set is named Onetty due to its circular
shape, smooth lines in addition to its authentic
Nubian engravings and relaxing feeling .
Chairs and tableya was designed to be less higher
than usual size to enhance the feeling of relaxation.





Shamandoura



From the Shamandoura Shape this Bench was inspired featuring a variety of folkloric Nubian motifs . its unique design reflects the authentic lines of the old Nubian (shamndoura) this tool is usually used to guide barks and ships along the route From africa to Egypt through the Nile. It represent a good significant for Nubian people till the point that they sang many songs for it.

